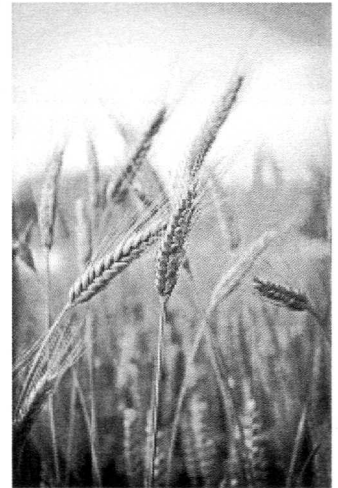


DEPARTMENT 12 HAY AND GRAIN

SECTION 1 GRAIN AND SEED CROPS

- One gallon jars with lids are to be used to show grain in classes 8 through 19.
- If the judges believe any exhibit was shown in the previous year, the entry will be refused.
- Corn entries will consist of six (6) ears

| | PREMIUMS | \$4.00 | \$3.00 | \$2.00 |
|-------------|---|--------|---------------|-----------------|
| CORN | | | GRAINS | |
| 1. | Hybrid Field Corn, yellow | | 8. | Oats |
| 2. | Hybrid Field Corn, white | | 9. | Wheat |
| 3. | Open Pollinated Field Corn, yellow | | 10. | Barley |
| 4. | Open Pollinated Field Corn, white | | 11. | Speltz |
| 5. | Open Pollinated Field Corn, red | | 12. | Alfalfa |
| 6. | Open Pollinated Indian Corn, ornamental | | 13. | Buckwheat |
| 7. | Popcorn | | 14. | Red Clover |
| | | | 15. | Rye |
| | | | 16. | Soy Bean |
| | | | 17. | Sunflower Seeds |
| | | | 18. | Timothy Seed |
| | | | 19. | Any Other |



SECTION 2 HAY

- Long hay only.
- Any exhibits shall consist of a bale section at least 8 inches thick or an equivalent amount if cut from hay in the mow.
- If the judges believe any exhibit was shown in the previous year, the entry will be refused.

| | PREMIUMS | \$4.00 | \$3.00 | \$2.00 |
|----------------|--|--------|--------|--------|
| CLASS # | | | | |
| 1. | Alfalfa or alfalfa grass mixed, first cutting. Not over 50% grasses | | | |
| 2. | Alfalfa or alfalfa grass, mixed, later cuttings. Not over 50% grasses. | | | |
| 3. | Other legumes or legumes grass mixtures. Not over 50% grasses. | | | |
| 4. | Grass first cutting. Mixture of timothy and/or other grasses, containing no more than 50% legumes. | | | |
| 5. | Grass, second cutting. Mixture of timothy and/or other grasses, containing no more than 50% legumes. | | | |
| 6. | Mixed hay. Any mixture not classified in the previous classes, but which contains 50% or more combination. | | | |
| 7. | Summer annual grasses - Sudan grass, Sorghum-Sudan, hybrids, etc. | | | |